



**SHIMU**  
*INFJNTE (PTY) LTD*

**COMPANY PROFILE**

**BUILDING** 1  
CONSTRUCTION

**CIVIL** 2  
CONSTRUCTION

**CLEANING** 3  
SERVICES

# ABOUT SHIMU INFINITE PTY LTD

**SHIMU INFINITE (PTY) LTD** is a registered Company under the DTI act and was incorporated in 2020. The business is 100% black owned and we pride ourselves with the quality work that it has been providing to the clients.

Driven by excellence and passion, **SHIMU INFINITE (PTY) LTD** offer Building Construction, Tiling, Plastering, Brick Work, Roofing, Waterproofing, Renovation, Civil, Cleaning services and all the other related services to the Provincial and Local Government Structure, Parastatal Companies, Business Institutions and individuals. CEO of **SHIMU INFINITE (PTY) LTD** is equipped with 6+ years experience in Building and Housing construction. Continuous improvement and growth have been an integral part of the company's culture. The company's business model is underpinned by a quality-oriented approach which is a core factor in achieving customers' satisfaction at all-time as we thrive to improve our services at all-time through innovation in a cost-efficient way.

# MISSION & VISION STATEMENT

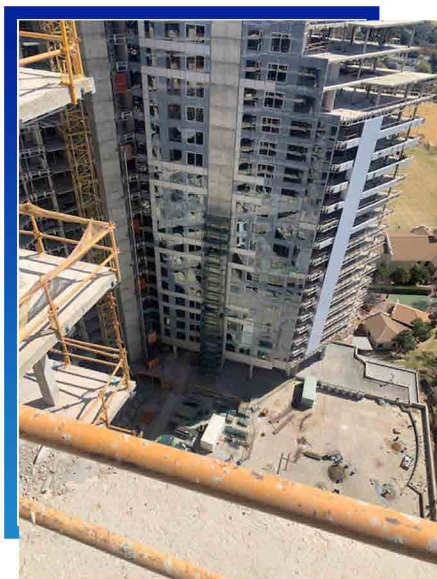
To offer an end-to-end solutions to our society in the most efficient and cost-effective manner for a guaranteed customer's satisfaction.

At **SHIMU INFINITE (PTY) LTD**, Small is big! We are here to serve the people of South Africa in uplifting and empowering our societies and communities through providing quality and affordable construction services.

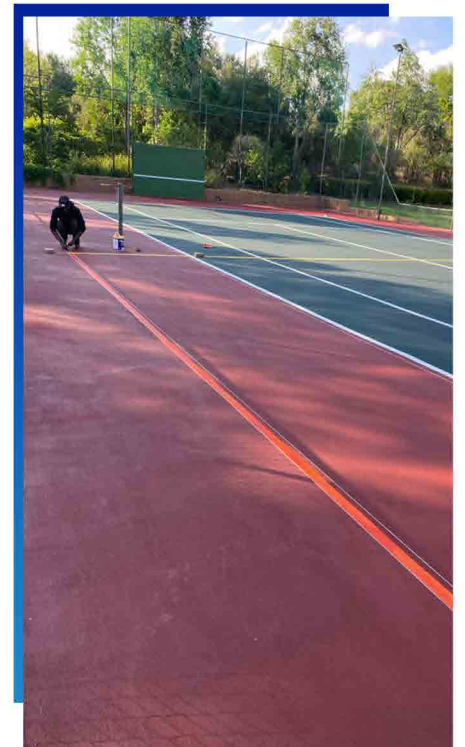
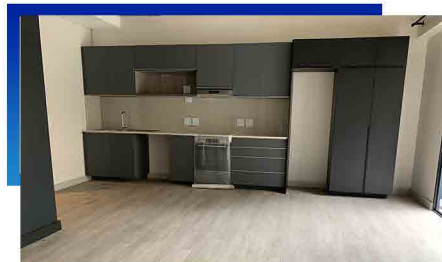
## Our Core Values

- Quality
- Integrity
- Customer-Centric
- Team work
- Service excellence
- Safety and wellbeing

# PORTFOLIO



# PORTFOLIO



# **SOME PROJECTS WE WORKED ON:**


- **Ext 35, Riverside with Tri Star**
- **The Lineal, 24 Fredman Drive Sandton**
- **Dept of Education, Pretoria**
- **Crawford School Lonehill**
- **Kagiso House – Kempton Park**
- **Excelsius Nursing College – Klerksdorp (NW)**
- **Kempton Park Village**
- **Tatchfield - Centurion**
- **Unisa - Florida**
- **ASCO Warehouse – Midrand**

# COMPANY DETAILS

NAME OF COMPANY : SHIMU INFINITE (PTY) LTD  
COMPANY REG NO. : 2020/624949/07

## CONTACT US

 061 400 4023

 shichavo@shimu.co.za

 www.shimu.co.za

 President Park, Midrand  
Johannesburg  
1685